

Granulator Knives & Screens



**GRANULATOR
KNIVES**

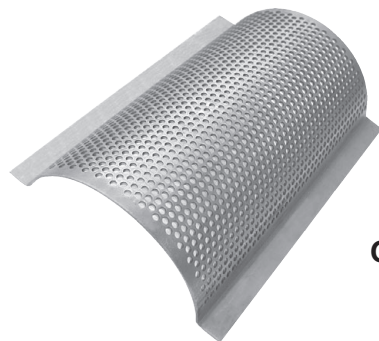
New Replacement Granulator Knives & Screens Fit All Name Brand Granulators

ABBE
ALBIS-MAZZA
ALEXENDARWERK
ALPINE
ALPINE-AMERICAN
ALSTEELE
AMACOIL (POLYMER)
ARP
BALL & JEWELL
BALL & JEWELL STERLING
BERLYN
BLACK FRIAR
BRABENDER
BUSS-CONDUX
CINCINNATI
COLORTRONIC
CONAIR
CONDUX
CORCORAN, R.S.
CUMBERLAND
DREHER
ENGELSMANN
ENTOLETER
FALZONI
FLINCHBAUGH (FPI)

FOLLGERI
FOREMOST
GLOUCESTER
GRANUTEC
GRUENDLER
HAMILTON
HERBOLD
HOOVER UNIVERSAL
HORAI
HUSKY
HYDRECLAIM
I M S
L & R
LEISTRITZ
MCCOSH

MECCANO-PLASTICA
MITTS & MERRILL
MOSER
MPG
NELMOR
NELMOR-PELLETIZER
NICKO
PALLMAN
PAX
POLYMER
PREVIERO
PRIMOTECHNICA
PROCESS CONTROL
RAINVILLE
RAMCO (R & A)

RAPID
RAPID-AMERICAN
ROTOGRAN
SATRIND
SCHOLBERG
SPROUT BAUER
SPROUT WALDREN
STERLING
TAYLOR STILES
TEMPTEK
TERRIER
THORESON-MCCOSH
TRIA
TRIPLE S
VAN DORN
WARNER-TECHNIK
WEIMA
WELDON
WILLIAMS
WITMAN
WORIC
WORTEX
YOUNG MACHINE
ZERGLOMAT
ZERMA



**GRANULATOR
SCREENS**

Explanation of Abbreviations:

R/K (Rotor Knife) B/K (Bed Knife)



RADIAL



S/A, K/E
Steep Angle, Keen Edge



S/A, R/B
Steep Angle, Reverse Bevel



HOOKED

Cumberland Granulator Knives

PART NO.	MODEL	O.E.M. PART NO.	SIZE	QTY/TYPER	HOLE	PRICE EACH
						D-2
CUM01800 D-2	0	N/A	4.500" x 1.468" x .375"	3 R/K Radial	3H	CALL FOR PRICING
CUM01805 D-2			4.500" x 2.125" x .500"	2 B/K	3S	
CUM01810 D-2	1/2	N/A	7.500" x 1.500" x .375"	3 R/K Radial	4H	
CUM01815 D-2			7.500" x 1.500" x .375"	3 R/K, H/G	4H	
CUM01820 D-2			7.500" x 2.750" x .625"	2 B/K	4S	
CUM01825 D-2	1 1/2	N/A	10.500" x 2.000" x .500"	3 or 5 Radial	5H	
CUM01830 D-2			10.500" x 2.750" x .625"	2 B/K	5S	
CUM01841 D-2	8x12	72,000 Series	11.875" x 2.390" x .437"	3 R/K, S/A	3H	
CUM01842 D-2			12.093" x 1.937" x .500"	1 B/K	3S	
CUM01845 D-2	Model 1 7x10, 8x10 1-85, 1-90 AA1	39,000 Series	10.000" x 2.750" x .500"	2 R/K, S/A, R/B	3H	
CUM01850 D-2			10.000" x 2.839" x .500"	2 R/K, S/A, K/E	3H	
CUM01855 D-2			10.250" x 2.062" x .500"	2 B/K	5S	
CUM01860 D-2	Model 2 8x12, 10x12 2-85, 2-90	25,000 Series	12.000" x 2.750" x .500"	2 R/K, S/A, R/B	5H	
CUM01865 D-2			12.000" x 2.839" x .500"	2 R/K, S/A, K/E	5H	
CUM01870 D-2		One End Angled	11.875" x 2.839" x .500"	3 R/K, S/A, K/E	4H	
CUM01875 D-2		One End Angled	11.875" x 2.750" x .500"	3 R/K, S/A, R/B	4H	
CUM01900 D-2			12.250" x 2.125" x .500"	2 B/K	4S	
CUM01905 D-2		Model 3, 3-85 8x16, 10x16	29,000 Series Part B-29029	16.000" x 2.839" x .500"	2 R/K, S/A, K/E	
CUM01910 D-2	16.000" x 2.750" x .500"			2 R/K, S/A, R/B	6H	
CUM01915 D-2	16.250" x 2.125" x .500"			2 B/K	5S	
CUM01920 D-2	Model 4, 4-85, 4-90 12x16, 14x16	21,000 Series	16.000" x 3.312" x .500"	2 R/K, S/A, K/E	6H	
CUM01925 D-2			16.000" x 3.250" x .500"	2 R/K, S/A, R/B	6H	
CUM01930 D-2		One End Angled	15.968" x 3.312" x .500"	3 R/K, S/A, K/E	4H	
CUM01935 D-2		One End Angled	15.968" x 3.250" x .500"	3 R/K, S/A, R/B	4H	
CUM01940 D-2			16.250" x 2.812" x .500"	2 B/K	5S	
CUM01945 D-2	Model 5, 5-85, 5-90 12x20, 14x20	35,000 Series	20.000" x 3.312" x .500"	2 R/K, S/A, K/E	7H	
CUM01950 D-2			20.000" x 3.250" x .500"	2 R/K, S/A, R/B	7H	
CUM01955 D-2		One End Angled	19.968" x 3.312" x .500"	3 R/K, S/A, K/E	5H	
CUM01960 D-2		One End Angled	19.968" x 3.250" x .500"	3 R/K, S/A, R/B	5H	
CUM01965 D-2			20.250" x 2.812" x .500"	2 B/K	7S	
CUM01980 D-2		2-84	One End Angled	11.875" x 2.750" x .500"	3 R/K, S/A, R/B	4H
CUM01985 D-2			12.250" X 2.750" X .500"	2 B/K	4S	
CUM01990 D-2	4-84	One End Angled	15.968" x 3.250" x .500"	3 R/K, S/A, R/B	4H	
CUM01995 D-2			16.187" x 2.750" x .500"	2 B/K	5S	
CUM02000 D-2	5-84	One End Angled	19.968" x 3.312" x .500"	3 R/K, S/A, K/E	5H	
CUM02005 D-2			20.250" x 2.812" x .500"	2 B/K	7S	

Rotor knives are match ground and should be purchased in sets.
Some of the above Cumberland knives are available in our standard steel.



Nelmor Granulator Knives

PART NO.*	MODEL	O.E.M. PART NO.	SIZE	QTY/TYPER	HOLE	PRICE EA.	
						STD.	D-2
NEL04600	G-66-M1	G1-93B	5.625" x 2.125" x .375"	2-3 R/K	3H	CALL FOR PRICING	
NEL04605		G1-23B	5.968" x 1.687" x .375"	2 B/K	3S		
NEL04610	AN8x8M	G2-118B, G2-001B	7.750" x 2.375" x .312"	2-3 R/K	3H		
NEL04615		G2-117B, G2-002B	7.937" x 1.875" x .375"	2 B/K	2S		
NEL04620	G6310, G810-M1, AN-1010M	G5-689B, G5-94B, G5-611B	9.500" x 2.375" x .437"	2-3 R/K	6H		
NEL04625		G5-584B, G5-17B, G5-612B	9.968" x 1.875" x .375"	2 B/K	5S		
NEL04630		G8-125B, G8-124B	6.000" x 1.875" x .375"	2-3 R/K	3H		
NEL04635		G8-126B, G8118B	6.180" x 2.000" x .250"	2 B/K	4S		
NEL04640		G8-200B, G89-200B	6.000" x 1.875" x .375"	2 R/K	3H		
NEL04645	GGB-1, 1018	D1-28B	10.000" x 1.250" x .250"	2 R/K Radial	3H		
NEL04650		D1-27B	10.484" x 1.875" x .625"	1 B/K	3S		
NEL04665	G1012M-1	G10-1063B, G10-120B, G10-968B	11.500" x 2.750" x .500"	2-3 R/K	7H		
NEL04670		G10-1046B, G10-27B, G10-969B	11.968" x 2.489" x .500"	2 B/K	7S		
NEL04675	G1424M-1	G25-1685B	23.500" x 2.750" x .750"	5 R/K Radial	6H		
NEL04680		G25-1686B	23.937" x 3.545" x .750"	2 B/K	7S		
NEL04685	G1424MB, G1424M-1, G2024MB, G1448-M1	Over 75 HP G25-1332B, G25-831B	23.500" x 3.937" x 1.000"	3-5 R/K, S/A	8H		
NEL04690	G1424MB	G25-946B	11.875" x 3.937" x 1.000"	6 R/K, S/A	4H		
NEL04695	G2436M-1, G3036M-1	G33-621B G33-140B	17.875" x 3.937" x 1.000"	6-10 R/K	6H		
NEL04700	G1454MB, G2054MB	G37-565B G38-38B	17.875" x 3.719" x 1.000"	6-10 R/K, R/B	6H		
NEL04705	G2436M-1, G3036M-1	G37-564B G37-548B	17.937" x 3.500" x .750"	4 B/K	6S		
NEL04710	G2436M-2, G3036M-2	G37-581B G37-359B	17.875" x 4.750" x 1.375"	6-10 R/K	6H		
NEL04715		G42-160B, G42-135B	17.937" x 3.500" x .750"	4 B/K	6S		
NEL04720	G2436M-2	G37-664B	8.937" x 3.937" x 1.000"	20 R/K	4H		
NEL04725	G2056	G-51B, G51-002B	18.562" x 3.937" x 1.000"	15 R/K, R/B	6H		
NEL04730		G51-001B	18.646" x 3.500" x .750"	6 B/K Rev.	6S		
NEL04735	G1436MB		17.875" x 3.750" x .750"	6-10 R/K, S/A, R/B	6H		
NEL04740	G3072MB, G3048MB	G41-10B	23.906" x 5.812" x 1.000"	6-9 R/K	8H		
NEL04745		G41-562B	23.250" x 6.000" x 1.000"	6-9 R/K	8H		
NEL04750	G1436MB, G2036MB	G37-1B 3/4 Clearance Slots	17.937" x 3.500" x .750"	4 B/K, Long Slots	6S		
NEL04755		G37-1R	17.875" x 3.750" x .750"	6-10 R/K, S/A	6H		
NEL04760	G3072MB, G3048MB	G41-9B	23.906" x 5.000" x 1.000"	4-6 B/K	10S		

*For D-2 knives, add "D-2" to the part number.

Rotor knives are match ground and should be purchased in sets.



Nelmor Granulator Knives

PART NO.*	MODEL	O.E.M. PART NO.	SIZE	QTY/TYPE	HOLE	PRICE EACH	
						STD.	D-2
NEL04765	24 x 36	G37-544B	17.875" x 4.500" x 1.000"	6-10 R/K, S/A, K/E	6H		
NEL04770	1448-B	--	23.250" x 3.560" x 1.322"	6 R/K Radial	8H		
NEL04775	G1424MB	--	23.562" x 3.750" x .750"	3-5 R/K, S/A, K/E	8H		
NEL04780			23.500" x 3.750" x 1.000"	6 R/K	8H		
NEL04785	6 x 7 Auger	G9-005B	5.812" x 2.375" x .312"	2 R/K, S/A	3H		
NEL04790		G9-001B	5.937" x 1.875" x .375"	1 B/K	2S		
NEL04795		G8-124B, G8-125B	6.000" x 1.875" x .375"	2-3 R/K	3H		
NEL04805	G1425B	D-2-003B	16.484" x 1.875" x .234"	2 B/K Tapered	--		
NEL04810	G1425B	D-2-004B	16.000" x 1.255" x .250"	2 R/K	4H		
NEL04815	G1425B	G15-436B	14.500" x 3.442" x .625"	2, 3, 6 R/K, R/B	5H		
NEL04830	G1215M-1, G16295M-1, G12295M-1, G1830M	G15-806B, G15-89B, G15-436B	14.500" x 3.625" x .625"	2-3 R/K, S/A, R/B	5H		
NEL04835	G1215M-1, G12295M-1, G16295M-1, G1830M-1, G2045M-1	G15-436C	14.500" x 3.442" x .625"	2-3-6 R/K	5H		
NEL04840	G1215M-1	G15-805B, G15-17B	14.968" x 2.750" x .625"	2 B/K	5S		
NEL04845	G12295M-1, G16295M-1	G22-634B, G22-11B	14.718" x 2.750" x .625"	4 B/K	5S		
NEL04850	G1830M	G32-455B, G32-137B	14.718" x 3.193" x .625"	4 B/K	5S		
NEL04855	G1416M-1	G13-018B, G13-062B	15.875" x 3.318" x .500"	3 R/K	4H		
NEL04860	G1416M-1	G13-017B, G13-061B	16.187" x 3.937" x .500"	2B/K	4S		
NEL04865	G1220M-1, G1620M-1, G1820M-1, RG10M-1, G1220M-1, G1620M-1, G1820M-1	G20-1181B, G20-2B G20-989B, G20-1181B G20-2B, G20-989B	19.500" x 3.625" x .625"	3 R/K	7H		
NEL04870	G1220M-1, G1620M-1, RG10M-1	G20-1180B, G20-13B, G20-988B	19.968" x 2.750" x .625"	2 B/K	7S		
NEL04875	G1436MB, G2036MB,	G37-578B, G37-3B, G37-564B, G37-577B, G37-548B, G37-564B, G37-577B	17.875" x 3.750" x .750"	6-10 R/K	6H		
NEL04880	G1436MB, G2036MB		17.937" x 3.500" x .750"	4 B/K	6S		
NEL04890	G1820M-1	G27-077B	19.968" x 3.187" x .625"	2 B/K	7S		
NEL04895	WG-600	G70-242B	19.625" x 2.875" x .500"	12 R/K	4H		
NEL04900		G70-241B	19.990" x 3.000" x .500"	6 B/K	4S		
NEL04905	G1424M-1, G2024MB, G1424M-B, G1448M-1, G1424M-1,	Up to 75 H.P. G25-1397B, G25- 1142B G25-121B	23.500" x 3.750" x .750"	3-5 R/K, S/A	8H		
NEL04910	G1424MB, G2024MB, G1448M-1	G25-1331B, G25-14B G25-1143B	23.937" x 3.500" x .750"	2 B/K	7S		

CALL FOR PRICING

*For D-2 knives, add "D-2" to the part number.

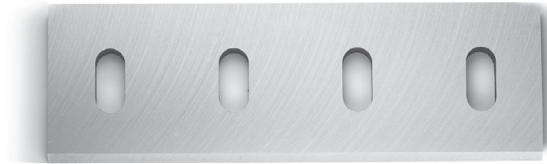
Rotor knives are match ground and should be purchased in sets.



Granulator Knife Quote Sheet

The following information is required for ordering or quoting purposes.

Granulator Manufacturer: _____
 Granulator Model Number: _____
 Manufacturer's Part Number: _____



Bed Knife

NOTE:
 Rotors are match ground.
 Order in full quantity sets.

<input type="checkbox"/> Bed Knife Number of Knives Required: _____ Number of Mounting Holes: _____ Additional Holes: _____ Specify Quantity and Types of Holes: ___ Countersunk ___ Counterbore ___ Tapped: Thread Size: _____ Thread Length: _____ ___ Thru-Hole: Size: _____ Number of Slots: _____ Length: _____ Width: _____ Thickness: _____ Material: <input type="checkbox"/> Standard <input type="checkbox"/> D-2	<input type="checkbox"/> Rotor Knife Edge Type: ___ Keen Edge ___ Reverse Bevel ___ Hi-Shear ___ Radial ___ Hook Number of Knives Required Per Set: _____ Number of Mounting Holes: _____ Additional Holes: _____ Specify Quantity and Types of Holes: ___ Countersunk ___ Counterbore ___ Tapped: Thread Size: _____ Thread Length: _____ ___ Thru-Hole: Size: _____ Number of Slots: Length: _____ Width: _____ Thickness: _____ Material: <input type="checkbox"/> Standard <input type="checkbox"/> D-2
------------------------------------------------------------------------------------------------------------------------------------------------------------------------------------------------------------------------------------------------------------------------------------------------------------------------------------------------------------------------------------------------------------------------------------------------------------------------------------------	-------------------------------------------------------------------------------------------------------------------------------------------------------------------------------------------------------------------------------------------------------------------------------------------------------------------------------------------------------------------------------------------------------------------------------------------------------------------------------------------------------------------------------------------------------------------------------------

Name: _____ Company : _____
 Mailing Address: _____ Shipping Address: _____

 Telephone: _____ Ext. _____ Fax: _____

FAX this completed form to
1-800-482-4059

or use "Request A Quote" on-line at www.servicesforplastics.com



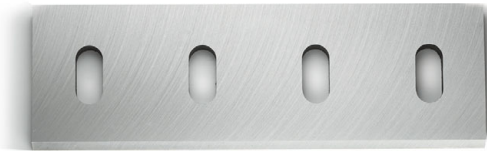
Improve Your Granulator's Overall Performance and Save Money Too!

Stationary Bed Knives and Rotating Fly Knives

- Stationary knife blade can be sharpened individually
- Rotating knife blades should be sent in sets for matched grinding and balancing
- Specify machine make and type
- Specify any minimum resharpening dimensions
- Quick turnaround



Fly Knife



Bed Knife

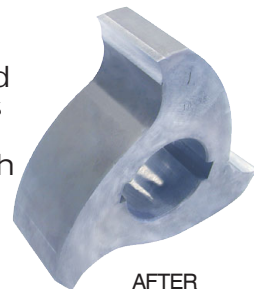
Conair/Wortex Fly Knives

- Diameter of the cutting circle remains unchanged
- Special diamond grinding tools sharpen the underside of insert only
- Includes sharpening of all 3 inserts



BEFORE

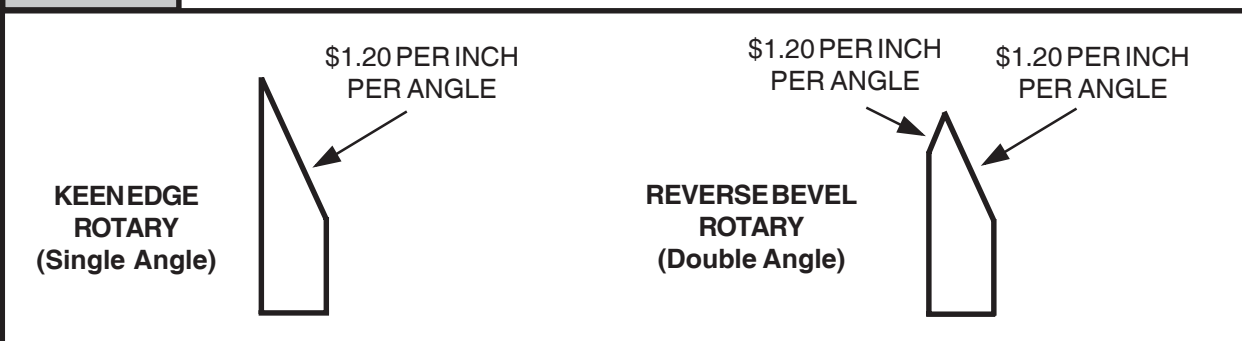
Segmented Fly Knives (3-tooth) \$6.75/Tooth



AFTER

For New Replacement Granulator Knife Blades, call us at **800-627-1033** or visit www.servicesforplastics.com

EXAMPLES:





High Quality Granulator Screens For All Name Brand Granulators

To request a quote, simply complete the following information and fax back to SFP at 1-800-482-4059

Model: _____

S/N of Machine: _____

Hole Size: _____

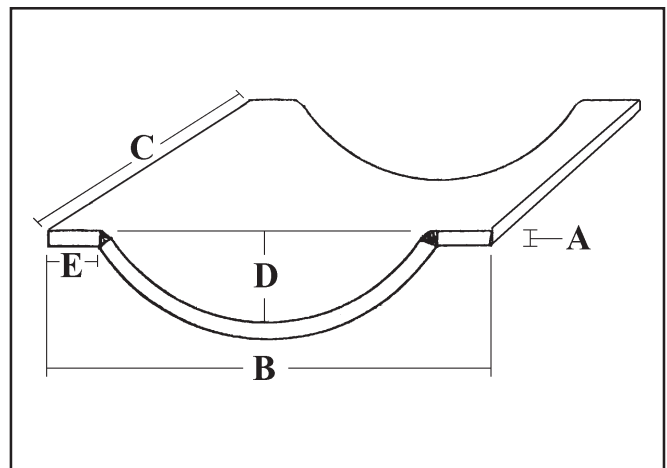
A. Thickness: _____

B. Width: _____ (from side to side)

C. Length: _____ (from front to back)

D. Depth of Arc: _____

E. Flange: No Yes; Width: _____



Name: _____	Company: _____
Mailing Address: _____	Shipping Address: _____
_____	_____
_____	_____
Telephone: _____	Ext. _____ Fax: _____

FAX this completed form to
1-800-482-4059

or use "Request A Quote" on-line at www.servicesforplastics.com