

Series 215 Bore Gauge Parts

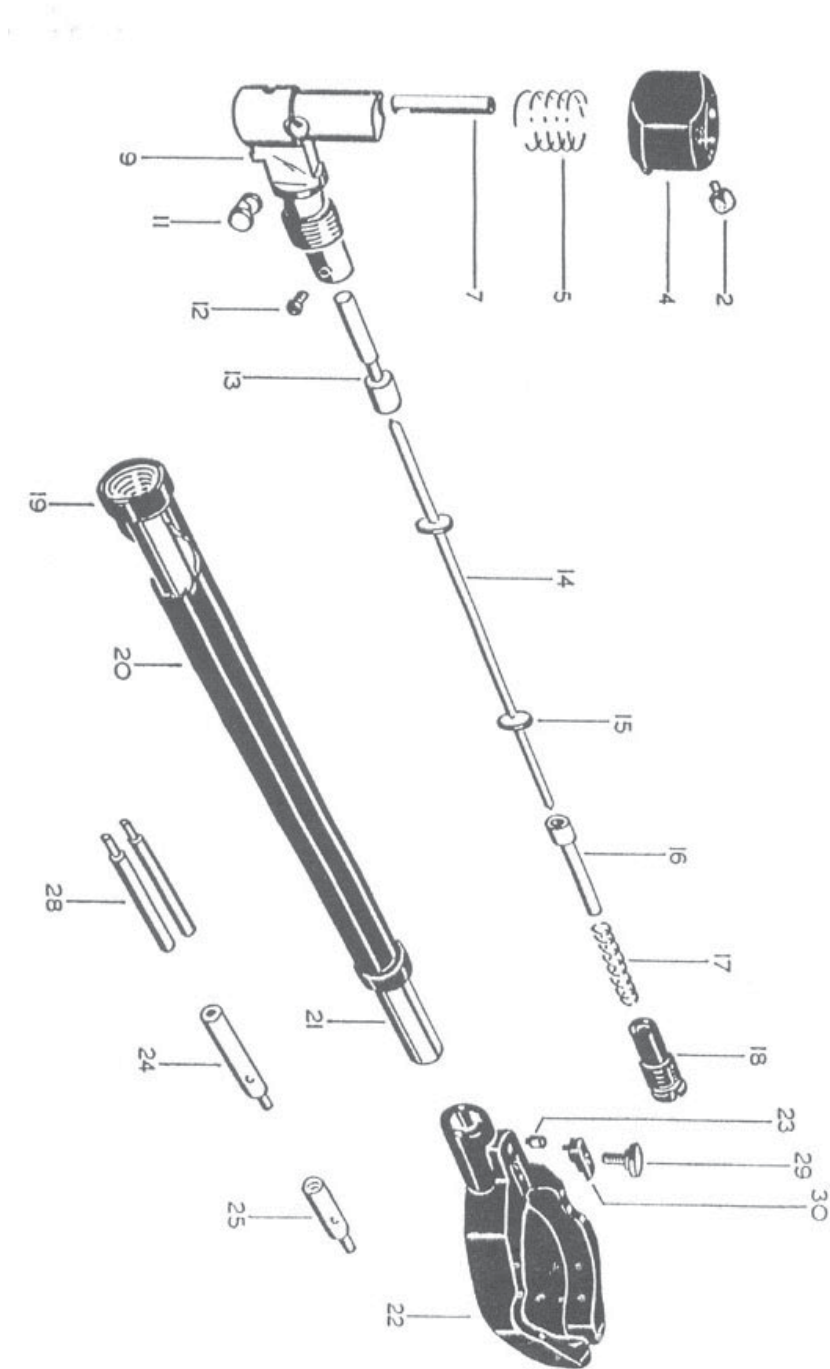
DRAWING REFERENCE NO.	PART NO.	DESCRIPTION	PRICE
1	C215/25	Ball Anvil Nut	Call for Pricing 800-627-1033
2	C215/26	Steel Ball (3/16" Diameter)	
2a	C215/26TC	Carbide Ball (3/16" Diameter)	
3	C215/24	Ball Anvil Seating	
4	C215/3	Shoe	
4a	C215/3M	Shoe (Metric)	
5	C215/4	Shoe Spring	
6	RD10/654	Shoe Stop Screw	
7	C215/5	Contact Plunger	
8	C215/31	Bell Crank Cover	
9	C215/2	Bottom Section	
10	C215/27	Plug	
11	C210/7	Bell Crank	
12	C210/48	Lower Plunger Retaining Screw	
13	C210/8	Lower Plunger	
13a	C210/8M	Lower Plunger (Metric)	
16	C210/10	Upper Plunger	
17	C210/11	Return Plunger Spring	
18	C210/9	Upper Plunger Guide	

DRAWING REFERENCE NO.	PART NO.	DESCRIPTION	PRICE
22	C215/1	Shroud (4 - Hole)	Call for Pricing 800-627-1033
22a	C215-1/BM	Shroud (3 - Hole)	
23	C210/49	Shroud Retaining Screw	
24	C215/14	Extension Rod (2" to 2-1/4")	
	C215/14M	Extension Rod (51mm to 57mm)	
24a	C215/15	Extension Rod (2-1/4" to 2-1/2")	
	C215/15M	Extension Rod (57mm to 63mm)	
24b	C215/16	Extension Rod (2-1/2" to 2-3/4")	
	C215/16M	Extension Rod (63mm to 69mm)	
24c	C215/17	Extension Rod (2-3/4" to 3")	
	C215/17M	Extension Rod (69mm to 76mm)	
24d	C215/18	Extension Rod (3" to 3-1/4")	
	C215/18M	Extension Rod (76mm to 82mm)	
24e	C215/19	Extension Rod (3-1/4" to 3-1/2")	
	C215/19M	Extension Rod (82mm to 89mm)	
24f	C215/20	Extension Rod (3-1/2" to 3-3/4")	
	C215/20M	Extension Rod (89mm to 95mm)	
24g	C215/21	Extension Rod (3-3/4" to 4")	
	C215/21M	Extension Rod (95mm to 102mm)	
*24i	PSE21510EXT SET	Extension Set	
25	C215/12	Sleeve Cap Adaptor	
25a	C215/12M	Sleeve Cap Adaptor (Metric)	
26	C215/13	Extension Rod Locknut	
27	C215/22	Spanner	
28	C215/23	Tommy Bar	
29	RD10/93	Bezel Clamp	
30	RD10/94	Bezel Clamp Screw	

* Extension Set includes extensions from 2" - 2-1/4" through 3-3/4" - 4", adapter, extension rod locknut, tommy bar, and spanner (wrench) (Metric Extension Set also available)

Bore Gauge Parts

Series 210 Parts



Series 210 Bore Gauge Parts

DRAWING REFERENCE NO.	PART NO.	DESCRIPTION	PRICE
2	C210/4	Shoe Contact	Call for Pricing 800-627-1033
4	C210/3	Shoe	
5	C210/5	Shoe Spring	
7	C210/6	Contact Plunger	
9	C210/2	Bottom Section	
11	C210/7	Bell Crank	
12	C210/48	Lower Plunger Retaining Screw	
13	C210/8	Lower Plunger	
15	C210/93	Middle Plunger Guide	
16	C210/10	Upper Plunger	
17	C210/11	Return Spring	
18	C210/9	Upper Plunger Guide	
22	C215/1	Shroud	
23	C210/49	Shroud Retaining Screw	
24	C210/33	Extension Rod (7/8" to 15/16")	
24a	C210/34	Extension Rod (15/16" to 1")	
24b	C210/35	Extension Rod (1" to 1-1/16")	
24c	C210/36	Extension Rod (1-1/16" to 1-1/8")	
24d	C210/37	Extension Rod (1-1/8" to 1-3/16")	
24e	C210/38	Extension Rod (1-3/16" to 1-1/4")	
24f	C210/39	Extension Rod (1-1/4" to 1-5/16")	
24g	C210/40	Extension Rod (1-5/16 to 1-3/8)	
24h	C210/41	Extension Rod (1-3/8" to 1-7/16")	
*24i	PSE21010EXT SET	Extension Set	
25	C210/43	Adaptor	
25	C210/44	Tommy Bar	
29	RD10/94	Bezel Clamp Screw	
30	RD10/93	Bezel Clamp	

* Extension Set includes extensions from 7/8" - 15/16" through 1-3/8" - 1-7/16", adaptor, extension rod locknut, tommy bar, and spanner (wrench)