

Torpedo Magnets

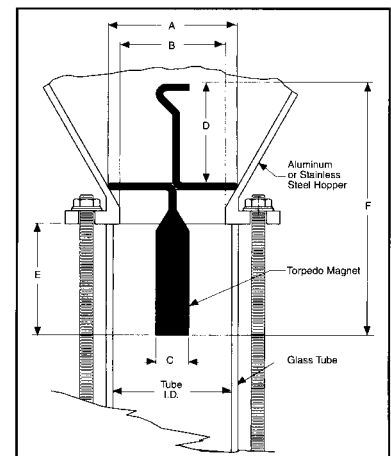


Bunting Torpedo Magnets are designed to be used in Just-In-Time (JIT) hopper loaders and are the best alternative to drawer magnets available.

The Torpedo Magnet consists of a formed stainless steel ring, welded to a high-energy rare earth magnetic cartridge, allowing the magnetic cartridge to hang suspended in the center of the JIT loader's glass tube. With the Torpedo Magnet in this position, tramp metal is captured before it can reach your plastic molding machine.

The bottom of the Torpedo Magnet is a live magnetic pole that allows tramp metal to collect and hide, preventing tramp metal wipe-off back into the product stream. The magnet can be inspected for tramp metal buildup by looking through the glass tube. The magnet can be removed and cleaned as required. The material level sensor, which is typically mounted on the outside of the JIT loader's glass tube, will not be affected by the Torpedo Magnet.

Torpedo Magnets are available in either 1" or 5/8" diameter high-energy rare earth magnetic cartridge designs. Four sizes are available to fit most Just-In-Time loaders. The diameter of the ring (A) should be larger than the hopper opening. Choose 5/8" diameter (C) Torpedo Magnets for applications where the sight glass is 2 1/4" in diameter or less. For sight glasses larger than 2 1/4", select 1" diameter Torpedo Magnets.



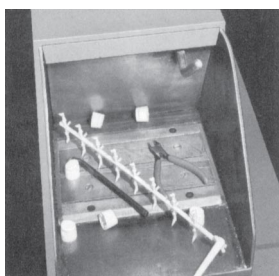
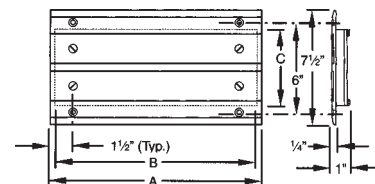
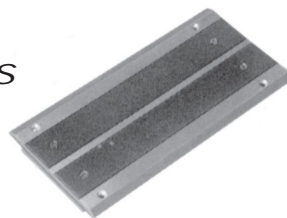
Specifications are subject to change without notice.

PART NO.	DIMENSIONS						PRICE EACH
	A	B (APPROX.)	C	D	E (APPROX.)	F	
21-00032	1 3/4"	1 5/8"	5/8"	1 7/8"	2 3/8"	4 3/4"	\$218.00
21-00034	1 3/4"	1 5/8"	1"	1 7/8"	3 11/16"	6 1/4"	\$308.00
21-00079	2 1/2"	1 7/8"	5/8"	1 7/8"	2 3/8"	4 3/4"	\$218.00
21-00080	2 1/2"	2"	1"	1 7/8"	3 11/16"	6 1/4"	\$308.00

Grinder Plate Magnets



For Plastic Granulators



Your regrind operation runs an extra risk of tramp metal contamination. Now you can protect it easily and economically with **Bunting Grinder Plate Magnets**. They install easily in your granulator's feed tray.

Each Grinder Plate Magnet is manufactured with a rugged cast aluminum frame. Back plate and magnetic pole face are made of mild steel. To install, just cut an opening in the feed tray and bolt the pre-drilled flange of the magnet to the tray, using the holes and hardware provided.

PART NO.	DIMENSIONS			PRICE EACH
	A	B	C	
GPM-8006	5 1/2"	5"	5"	\$149.00
GPM-8008	7 1/2"	7"	5"	\$177.00
GPM-8010	9 1/2"	9"	5"	\$209.00
GPM-8012	11 1/2"	11"	5"	\$245.00
GPM-8014	13"	12 1/2"	5"	\$261.00
GPM-8016	15"	14 1/2"	5"	\$279.00
GPM-8018	17"	16 1/2"	5"	\$296.00
GPM-8020	19"	18 1/2"	5"	\$307.00
GPM-8022	21"	20 1/2"	5"	\$333.00
GPM-8024	23"	22 1/2"	5"	\$364.00