

Nyracord® Anti-Fatigue/Safety Mats

What is Nyracord®?

Nyracord® is a durable, “almost indestructible” combination of tough fibers and rubber blended to give you the finest industrial floor matting on the market today. Nyracord® matting withstands constant turning on heels and soles in confined areas. Designed for foot and leg comfort, plus safety underfoot. All of our Nyracord® mats have a ribbed underside to allow aeration and drainage to help prevent mildew.

Nyracord® Walk-Ez®

Walk-Ez® is a best buy for applications desiring a premium quality, long lasting, easy to clean anti-fatigue matting. This multi-purpose mat will last up to 5 times longer than other rubber and vinyl runner mats.

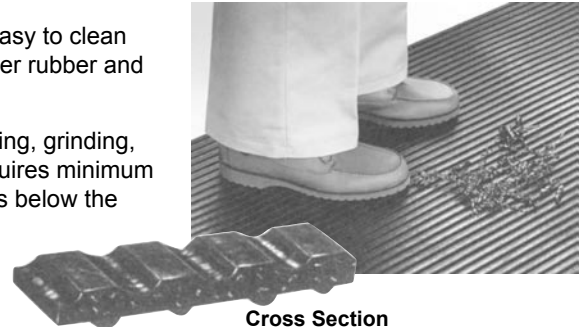
Since Walk-Ez® will withstand temperatures of over 400°F, it can be used in welding, grinding, or machinery areas, places where other mats may tear, melt or rot. Walk-Ez® requires minimum maintenance as dirt, moisture, or foreign particles will fall into the concave valleys below the walking surface.

FEATURES:

- Reversible for Added Traction on Ramps or Inclines
- Excellent Traction Surface Even When Wet
- Easy to Clean with Broom or Sweeper

SPECIFICATIONS: 3/8" Thick

COLOR: Black



Cross Section

PART NO.	DESCRIPTION	WIDTH	LENGTH	WEIGHT	PKG	PRICE
AFM-2171	Standard Roll	3'	22'	135 lbs./rl.	1/ctn.	Call for Pricing
AFM-2172	Standard Roll	4'	22'	200 lbs./rl.	1/ctn.	Call for Pricing

All lengths, weights, and thicknesses are approximate.

Nyracord® EZ-Walk®

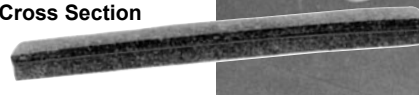
EZ-Walk® features a heavy duty smooth rubber surface bonded to a full 1/2" thick sponge rubber base. Nyracord EZ-Walk® will withstand heavy wheeled cart and fork lift traffic without ripping, tearing or curling. Beveled edges on all sides minimize tripping hazards. Use in assembly areas, packaging areas, shipping/receiving stations, machine shops, warehousing areas, and other industrial work areas.

FEATURES:

- Heavy duty to withstand wheel traffic.
- Beveled edges to minimize tripping hazards.
- 1/2" thick sponge rubber base for comfort.

SPECIFICATIONS: 1/2" Thick

Cross Section



PART NO.	DESCRIPTION	WIDTH	LENGTH	WEIGHT	PKG	PRICE/UNIT
AFM-2360	Standard Roll	3'	22'	132 lbs./rl.	1/ctn.	Call for Pricing
AFM-2365	Standard Roll	4'	22'	180 lbs./rl.	1/ctn.	

Nyracord® Counter Tred®

Counter Tred® is ideal for use in production, assembly, and heavy traffic areas. The open slot design promotes safety by allowing foreign particles, oil, or moisture to drop through the mat. Counter Tred® reduces fatigue allowing air to circulate underfoot. The ribbed underside permits aeration and drainage for improved sanitation while 1/2" thickness allows mat to stay in place and prevents edges from curling.

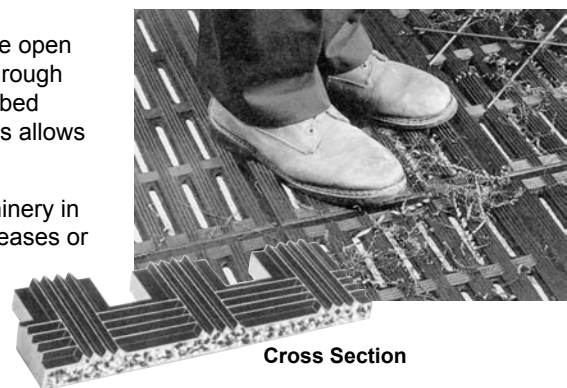
Grease resistant Counter Tred® matting adapts itself perfectly to use around machinery in factories and machine shops. It provides better footing where water, petroleum greases or oils cause slippery conditions.

FEATURES:

- Estimated 10 Years of Life in an Injection Molding Environment
- Reduces Fatigue
- Heavy Duty 1/2" Thick Nyracord® Withstands Wheel Traffic
- Unique Ribbed Pattern for Sure Footing
- Promotes Safety in Wet or Oily Areas

SPECIFICATIONS: 1/2" Thick

COLOR: Black



Cross Section

PART NO.	DESCRIPTION	WIDTH	LENGTH	WEIGHT	PKG	PRICE
AFM-2000	Regular Roll	2'	22'	95 lbs./rl.	1/ctn.	Call for Pricing
AFM-2002	Regular Roll	3'	22'	140 lbs./rl.	1/ctn.	
AFM-2003	Regular Roll	4'	22'	190 lbs./rl.	1/ctn.	
AFM-2032	Grease Resistant Roll	3'	22'	140 lbs./rl.	1/ctn.	
AFM-2033	Grease Resistant Roll	4'	22'	190 lbs./rl.	1/ctn.	

Available with fully closed slots upon request.

All lengths, weights, and thicknesses are approximate.