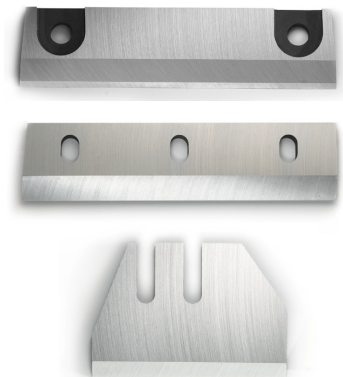
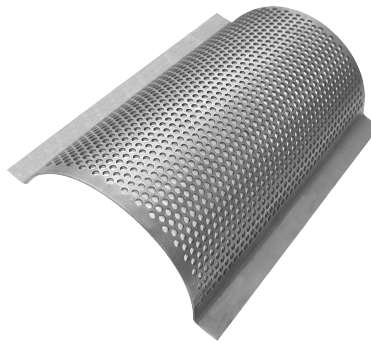


Granulator Knives & Screens



New Replacement Granulator Knives & Screens Fit All Name Brand Granulators

ABBE
 ADAMS
 ADLER
 AEC-NELMOR
 ALBIS-MAZZA
 ALEXENDARWERK
 ALPINE
 ALPINE-AMERICAN
 ALSTEELE
 ALSTEELE-ENTOLETER
 AMACOIL
 AMACOIL-POLYMER
 AMACOIL-RAPID
 ARP
 AUTOGRIND
 AVIAN
 BAKER PERKINS
 BALL & JEWELL
 BALL & JEWELL-NELMOR
 BALL & JEWELL-STERLING
 BATTENFELD
 BEKUM
 BELOIT
 BERLYN
 BLACKFRIARS
 BMI MACHINES
 BRABENDER
 BUSS-CONDUX
 CINCINNATI
 CMB
 CMG
 COLORTRONIC
 COMET
 COMMODORE
 CONAIR
 CONAIR-HUSGARD
 CONAIR-WORTEX
 CONDUX

COPELAND
 CORCORAN, R.S.
 COSMOPLASTICS
 CUMBERLAND
 DREHER
 DRYFLO
 EAGLE
 ECONOGRIND
 ENGELSMANN
 ENTOLETER
 EREMA
 FALZONI
 FLINCHBAUGH (FPI)
 FLOCKER
 FOLLCERI
 FOREMOST
 FOREMOST-GRANUTEC
 FRANKLIN MILLER TASK-
 MASTER
 GETECHA
 GLOUCESTER
 GRANUTEC
 GRUENDLER
 HAMILTON
 HERBOLD
 HERBOLD-MECKESHEIM
 HOOVER UNIVERSAL
 HORAI
 HOSOKAWA MICRON
 HUSKY
 HYDROCLAIM
 ILLIG
 I M S
 INTRAPALA
 JORDAN REDUCTION
 L & R
 LEISTRITZ
 LINDNER

LODI
 MCCOSH
 MAGUIRE
 MAKU
 MARATHON-NELMOR
 MECCANO-PLASTICA
 MITTS & MERRILL
 MOSER
 MPG
 NELMOR
 NELMOR-AEC
 NELMOR-BALL & JEWELL
 NELMOR-PELLETIZER
 NEUE-HERBOLD
 NGR
 NICKO
 ORENDA
 PACIFIC RIM
 PAGANI
 PALLMANN
 PANCHAL
 PAX
 POLYMER
 POLYMER-AMACOIL
 POLYMER-RAPID
 PREVIERO
 PRIMOTECHNICA
 PROCESS CONTROL
 RAINVILLE
 RAMCO (R & A)
 RAPID
 RAPID-AMERICAN
 RAPID-CONAIR
 REPUBLIC
 RETECH
 ROTOGRAN
 ROYAL
 SATRIND

SCHOLBERG
 SECURITY ENGINEERED
 MACHINE
 SEM-NELMOR
 SHINI
 SHINI USA
 SOREMA
 SPROUT BAUER
 SPROUT WALDRON
 SSI
 STERLING
 TAYLOR STILES
 TEMPTEK
 TERRIER
 THORESON-MCCOSH
 TOSHIBA MACHINE
 TRIA
 TRIA AMERICA
 TRIPLE S
 UNI-DYN
 UNTHA
 VAN DORN
 VECOPLAN
 WARNER-TECHNIK
 WEIMA
 WEIMA AMERICA
 WELDON
 WILLIAMS
 WITTMANN
 WITTMANN-BATTENFELD
 WORIC
 WORTEX
 YOUNG MACHINE
 ZENO
 ZERGLOMAT
 ZERMA

Explanation of Abbreviations:

R/K (Rotor Knife) B/K (Bed Knife)



RADIAL



S/A, K/E
Steep Angle, Keen Edge



S/A, R/B
Steep Angle, Reverse Bevel



HOOKED

Cumberland Granulator Knives

PART NO.	MODEL	O.E.M. PART NO.	SIZE	QTY/TYPE	HOLE	PRICE EACH
						D-2
CUM01800 D-2	0	N/A	4.500" x 1.468" x .375"	3 R/K Radial	3H	CALL FOR PRICING
CUM01805 D-2			4.500" x 2.125" x .500"	2 B/K	3S	
CUM01810 D-2	1/2	N/A	7.500" x 1.500" x .375"	3 R/K Radial	4H	
CUM01815 D-2			7.500" x 1.500" x .375"	3 R/K, H/G	4H	
CUM01820 D-2			7.500" x 2.750" x .625"	2 B/K	4S	
CUM01825 D-2	1 1/2	N/A	10.500" x 2.000" x .500"	3 or 5 Radial	5H	
CUM01830 D-2			10.500" x 2.750" x .625"	2 B/K	5S	
CUM01841 D-2	8x12	72,000 Series	11.875" x 2.390" x .437"	3 R/K, S/A	3H	
CUM01842 D-2			12.093" x 1.937" x .500"	1 B/K	3S	
CUM01845 D-2	Model 1 7x10, 8x10 1-85, 1-90 AA1	39,000 Series	10.000" x 2.750" x .500"	2 R/K, S/A, R/B	3H	
CUM01850 D-2			10.000" x 2.839" x .500"	2 R/K, S/A, K/E	3H	
CUM01855 D-2			10.250" x 2.062" x .500"	2 B/K	5S	
CUM01860 D-2	Model 2 8x12, 10x12 2-85, 2-90	25,000 Series	12.000" x 2.750" x .500"	2 R/K, S/A, R/B	5H	
CUM01865 D-2			12.000" x 2.839" x .500"	2 R/K, S/A, K/E	5H	
CUM01870 D-2		One End Angled	11.875" x 2.839" x .500"	3 R/K, S/A, K/E	4H	
CUM01875 D-2		One End Angled	11.875" x 2.750" x .500"	3 R/K, S/A, R/B	4H	
CUM01900 D-2			12.250" x 2.125" x .500"	2 B/K	4S	
CUM01905 D-2		Model 3, 3-85 8x16, 10x16	29,000 Series Part B-29029	16.000" x 2.839" x .500"	2 R/K, S/A, K/E	
CUM01910 D-2	16.000" x 2.750" x .500"			2 R/K, S/A, R/B	6H	
CUM01915 D-2	16.250" x 2.125" x .500"			2 B/K	5S	
CUM01920 D-2	Model 4, 4-85, 4-90 12x16, 14x16	21,000 Series	16.000" x 3.312" x .500"	2 R/K, S/A, K/E	6H	
CUM01925 D-2			16.000" x 3.250" x .500"	2 R/K, S/A, R/B	6H	
CUM01930 D-2		One End Angled	15.968" x 3.312" x .500"	3 R/K, S/A, K/E	4H	
CUM01935 D-2		One End Angled	15.968" x 3.250" x .500"	3 R/K, S/A, R/B	4H	
CUM01940 D-2			16.250" x 2.812" x .500"	2 B/K	5S	
CUM01945 D-2		Model 5, 5-85, 5-90 12x20, 14x20	35,000 Series	20.000" x 3.312" x .500"	2 R/K, S/A, K/E	
CUM01950 D-2			20.000" x 3.250" x .500"	2 R/K, S/A, R/B	7H	
CUM01955 D-2	One End Angled		19.968" x 3.312" x .500"	3 R/K, S/A, K/E	5H	
CUM01960 D-2	One End Angled		19.968" x 3.250" x .500"	3 R/K, S/A, R/B	5H	
CUM01965 D-2			20.250" x 2.812" x .500"	2 B/K	7S	
CUM01980 D-2	2-84		One End Angled	11.875" x 2.750" x .500"	3 R/K, S/A, R/B	4H
CUM01985 D-2			12.250" X 2.750" X .500"	2 B/K	4S	
CUM01990 D-2	4-84	One End Angled	15.968" x 3.250" x .500"	3 R/K, S/A, R/B	4H	
CUM01995 D-2			16.187" x 2.750" x .500"	2 B/K	5S	
CUM02000 D-2	5-84	One End Angled	19.968" x 3.312" x .500"	3 R/K, S/A, K/E	5H	
CUM02005 D-2			20.250" x 2.812" x .500"	2 B/K	7S	

Rotor knives are match ground and should be purchased in sets.
Some of the above Cumberland knives are available in our standard steel.

Nelmor Granulator Knives

PART NO.*	MODEL	O.E.M. PART NO.	SIZE	QTY/TYPER	HOLE	PRICE EA.	
						STD.	D-2
NEL04600	G-66-M1	G1-93B	5.625" x 2.125" x .375"	2-3 R/K	3H	CALL FOR PRICING	
NEL04605		G1-23B	5.968" x 1.687" x .375"	2 B/K	3S		
NEL04610	AN8x8M	G2-118B, G2-001B	7.750" x 2.375" x .312"	2-3 R/K	3H		
NEL04615		G2-117B, G2-002B	7.937" x 1.875" x .375"	2 B/K	2S		
NEL04620	G6310, G810-M1, AN-1010M	G5-689B, G5-94B, G5-611B	9.500" x 2.375" x .437"	2-3 R/K	6H		
NEL04625		G5-584B, G5-17B, G5-612B	9.968" x 1.875" x .375"	2 B/K	5S		
NEL04630		G8-125B, G8-124B	6.000" x 1.875" x .375"	2-3 R/K	3H		
NEL04635		G8-126B, G8118B	6.180" x 2.000" x .250"	2 B/K	4S		
NEL04640		G8-200B, G89-200B	6.000" x 1.875" x .375"	2 R/K	3H		
NEL04645	GBB-1, 1018	D1-28B	10.000" x 1.250" x .250"	2 R/K Radial	3H		
NEL04650		D1-27B	10.484" x 1.875" x .625"	1 B/K	3S		
NEL04665	G1012M-1	G10-1063B, G10-120B, G10-968B	11.500" x 2.750" x .500"	2-3 R/K	7H		
NEL04670		G10-1046B, G10-27B, G10-969B	11.968" x 2.489" x .500"	2 B/K	7S		
NEL04675	G1424M-1	G25-1685B	23.500" x 2.750" x .750"	5 R/K Radial	6H		
NEL04680		G25-1686B	23.937" x 3.545" x .750"	2 B/K	7S		
NEL04685	G1424MB, G1424M-1, G2024MB, G1448-M1	Over 75 HP G25-1332B, G25-831B	23.500" x 3.937" x 1.000"	3-5 R/K, S/A	8H		
NEL04690	G1424MB	G25-946B	11.875" x 3.937" x 1.000"	6 R/K, S/A	4H		
NEL04695	G2436M-1, G3036M-1	G33-621B G33-140B	17.875" x 3.937" x 1.000"	6-10 R/K	6H		
NEL04700	G1454MB, G2054MB	G37-565B G38-38B	17.875" x 3.719" x 1.000"	6-10 R/K, R/B	6H		
NEL04705	G2436M-1, G3036M-1	G37-564B G37-548B	17.937" x 3.500" x .750"	4 B/K	6S		
NEL04710	G2436M-2, G3036M-2	G37-581B G37-359B	17.875" x 4.750" x 1.375"	6-10 R/K	6H		
NEL04715		G42-160B, G42-135B	17.937" x 3.500" x .750"	4 B/K	6S		
NEL04720	G2436M-2	G37-664B	8.937" x 3.937" x 1.000"	20 R/K	4H		
NEL04725	G2056	G-51B, G51-002B	18.562" x 3.937" x 1.000"	15 R/K, R/B	6H		
NEL04730		G51-001B	18.646" x 3.500" x .750"	6 B/K Rev.	6S		
NEL04735	G1436MB		17.875" x 3.750" x .750"	6-10 R/K, S/A, R/B	6H		
NEL04740	G3072MB, G3048MB	G41-10B	23.906" x 5.812" x 1.000"	6-9 R/K	8H		
NEL04745		G41-562B	23.250" x 6.000" x 1.000"	6-9 R/K	8H		
NEL04750	G1436MB, G2036MB	G37-1B 3/4 Clearance Slots	17.937" x 3.500" x .750"	4 B/K, Long Slots	6S		
NEL04755		G37-1R	17.875" x 3.750" x .750"	6-10 R/K, S/A	6H		
NEL04760	G3072MB, G3048MB	G41-9B	23.906" x 5.000" x 1.000"	4-6 B/K	10S		

*For D-2 knives, add "D-2" to the part number.

Rotor knives are match ground and should be purchased in sets.

Nelmor Granulator Knives

PART NO.*	MODEL	O.E.M. PART NO.	SIZE	QTY/TYPER	HOLE	PRICE EACH	
						STD.	D-2
NEL04765	24 x 36	G37-544B	17.875" x 4.500" x 1.000"	6-10 R/K, S/A, K/E	6H	CALL FOR PRICING	
NEL04770	1448-B	--	23.250" x 3.560" x 1.322"	6 R/K Radial	8H		
NEL04775	G1424MB	--	23.562" x 3.750" x .750"	3-5 R/K, S/A, K/E	8H		
NEL04780			23.500" x 3.750" x 1.000"	6 R/K	8H		
NEL04785	6 x 7 Auger	G9-005B	5.812" x 2.375" x .312"	2 R/K, S/A	3H		
NEL04790		G9-001B	5.937" x 1.875" x .375"	1 B/K	2S		
NEL04795		G8-124B, G8-125B	6.000" x 1.875" x .375"	2-3 R/K	3H		
NEL04805	G1425B	D-2-003B	16.484" x 1.875" x .234"	2 B/K Tapered	--		
NEL04810	G1425B	D-2-004B	16.000" x 1.255" x .250"	2 R/K	4H		
NEL04815	G1425B	G15-436B	14.500" x 3.442" x .625"	2, 3, 6 R/K, R/B	5H		
NEL04830	G1215M-1, G16295M-1, G12295M-1, G1830M-1	G15-806B, G15-89B, G15-436B	14.500" x 3.625" x .625"	2-3 R/K, S/A, R/B	5H		
NEL04835	G1215M-1, G12295M-1, G16295M-1, G1830M-1, G2045M-1	G15-436C	14.500" x 3.442" x .625"	2-3-6 R/K	5H		
NEL04840	G1215M-1	G15-805B, G15-17B	14.968" x 2.750" x .625"	2 B/K	5S		
NEL04845	G12295M-1, G16295M-1	G22-634B, G22-11B	14.718" x 2.750" x .625"	4 B/K	5S		
NEL04850	G1830M	G32-455B, G32-137B	14.718" x 3.193" x .625"	4 B/K	5S		
NEL04855	G1416M-1	G13-018B, G13-062B	15.875" x 3.318" x .500"	3 R/K	4H		
NEL04860	G1416M-1	G13-017B, G13-061B	16.187" x 3.937" x .500"	2B/K	4S		
NEL04865	G1220M-1, G1620M-1, G1820M-1, RG10M-1, G1220M-1, G1620M-1, G1820M-1	G20-1181B, G20-2B G20-989B, G20-1181B G20-2B, G20-989B	19.500" x 3.625" x .625"	3 R/K	7H		
NEL04870	G1220M-1, G1620M-1, RG10M-1	G20-1180B, G20-13B, G20-988B	19.968" x 2.750" x .625"	2 B/K	7S		
NEL04875	G1436MB, G2036MB,	G37-578B, G37-3B, G37-564B, G37-577B, G37-548B, G37-564B, G37-577B	17.875" x 3.750" x .750"	6-10 R/K	6H		
NEL04880	G1436MB, G2036MB		17.937" x 3.500" x .750"	4 B/K	6S		
NEL04890	G1820M-1	G27-077B	19.968" x 3.187" x .625"	2 B/K	7S		
NEL04895	WG-600	G70-242B	19.625" x 2.875" x .500"	12 R/K	4H		
NEL04900		G70-241B	19.990" x 3.000" x .500"	6 B/K	4S		
NEL04905	G1424M-1, G2024MB, G1424M-B, G1448M-1, G1424M-1,	Up to 75 H.P. G25-1397B, G25- 1142B G25-121B	23.500" x 3.750" x .750"	3-5 R/K, S/A	8H		
NEL04910	G1424MB, G2024MB, G1448M-1	G25-1331B, G25-14B G25-1143B	23.937" x 3.500" x .750"	2 B/K	7S		

*For D-2 knives, add "D-2" to the part number.

Rotor knives are match ground and should be purchased in sets.

Granulator Knife Blade Resharpener

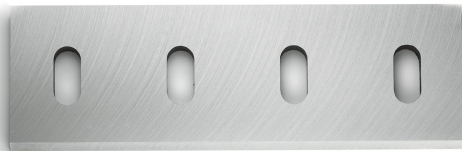
Improve Your Granulator's Overall Performance and Save Money Too!

Stationary Bed Knives and Rotating Fly Knives

- Stationary knife blade can be sharpened individually
- Rotating knife blades should be sent in sets for matched grinding and balancing
- Specify machine make and type
- Specify any minimum resharpening dimensions
- Quick turnaround



Fly Knife



Bed Knife

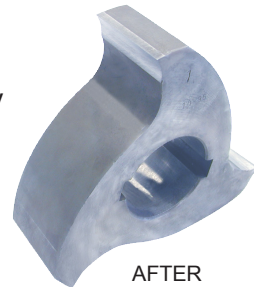
Conair/Wortex Fly Knives

- Diameter of the cutting circle remains unchanged
- Special diamond grinding tools sharpen the underside of insert only
- Includes sharpening of all 3 inserts



BEFORE

Segmented Fly
Knives
(3-Tooth)
\$\$\$ / Tooth



AFTER

For New Replacement Granulator Knife Blades,
call us at **800-627-1033**

