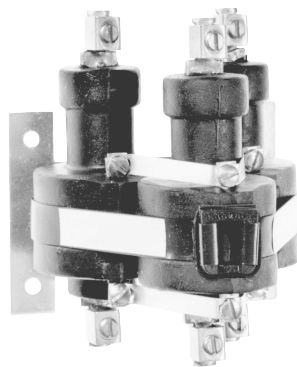




Replace your Mechanical Heater Load Contactors with Top Quality Mercury Contactors



2-pole



3-pole

GENERAL INFORMATION:

Mercury Displacement Contactors are all designed and built to meet the most exacting demands of industry. Their service life is equal to that of the solid state contactor, even under adverse conditions of temperature, dust, and moisture. Each pole is hermetically sealed with high quality glass-to-metal seals to prevent moisture damage and voltage breakdown through the protective coating. Mercury Contactors are available in single or multiple pole units and in several coil voltages.

FEATURES & BENEFITS:

- Hermetically Sealed Steel Body Making Contact Impervious to Adverse Conditions and External Arcing
- One Coil for Each Set of Contacts Assures Consistent Switching and Minimizes Pull-in Variation Between Contacts
- Rapid On-Off Cycling
- Lower Maintenance Cost
- Reduced Down-time

ADVANTAGES OVER MECHANICAL CONTACTORS:

- Superior Performance and Reliability for Longer Life and Durability
- More Compact Size for Easy Installation
- Lower, Predictable Contact Resistance
- Handles a Variety of Loads for Increased Design Flexibility
- Lower Coil Power Requirements
- Minimal Derating Due to Higher Ambient Temperatures
- Quieter Action

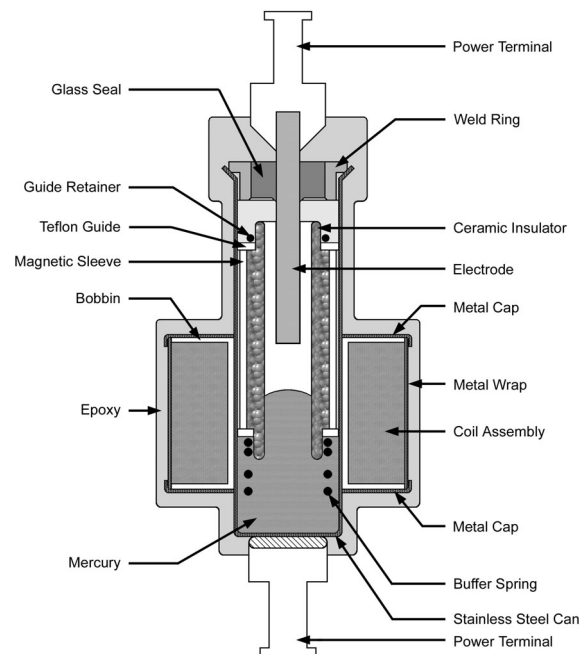
35/60-AMP SPECIFICATIONS (Normally Open units):

- **Operate Time:** 50 milliseconds
- **Release Time:** 80 milliseconds
- **Contact Resistance:**
35-AMP = .003 ohm*
60-AMP = .002 ohm*
- **Dielectric Withstand:** 2500 VAC RMS
- **Longevity:** millions of cycles
- **Temperature Range:** -35°C to 85°C
- **Coil Terminals:** #6 binding head screws
- **Load Terminals:** pressure connectors for A.W.G. #4-#14 on 35-AMP units and A.W.G. #2-#8 on 60-AMP units.

100-AMP SPECIFICATIONS (Normally Open units):

- **Operate Time:** 50 milliseconds
- **Release Time:** 80 milliseconds
- **Contact Resistance:** .001 ohm*
- **Dielectric Withstand:** 2500 VAC RMS
- **Longevity:** millions of cycles
- **Temperature Range:** -35°C to 85°C
- **Coil Terminals:** #6 binding head screws
- **Load Terminals:** pressure connectors (standard accepts A.W.G. #2-#12)

*After cycling under load.

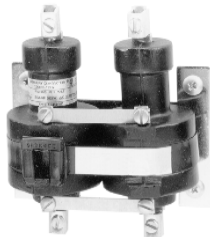


Mercury Contactors - Specifications



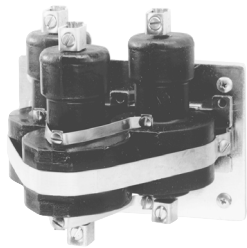
1 POLE - Normally Open

LOAD RATING	VOLTAGE	VOLT AMPERES V/A	POWER (watts)	PART NO.	PRICE EACH	
					1-9	10+
35-AMP	120 VAC	6.4	3.5	35NO-120A	\$23.60	\$22.80
	24 VDC	3.3	3.3	35NO-24D	\$23.60	\$22.80
	240 VAC	6.2	3.8	35NO-220A	\$27.25	\$26.30
60-AMP	120 VAC	5.8	2.9	60NO-120A	\$36.80	\$35.50
	24 VDC	3.3	3.3	60NO-24D	\$36.80	\$35.50
	240 VAC	5.9	3.5	60NO-220A	\$40.40	\$39.00
100-AMP	120 VAC	16.4	7.1	100NO-120A	\$86.80	\$83.70
	24 VDC	8.9	8.9	100NO-24D	\$86.80	\$83.70
	240 VAC	16.1	7.5	100NO-220A	\$89.85	\$86.65



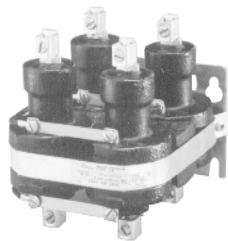
2 POLE - Normally Open

LOAD RATING	VOLTAGE	VOLT AMPERES V/A	POWER (watts)	PART NO.	PRICE EACH	
					1-9	10+
35-AMP	120 VAC	12.8	7.0	235NO-120A	\$47.15	\$45.50
	24 VDC	6.6	6.6	235NO-24D	\$47.15	\$45.50
	240 VAC	12.4	7.6	235NO-220A	\$54.40	\$52.50
60-AMP	120 VAC	11.6	5.8	260NO-120A	\$71.40	\$68.95
	24 VDC	6.6	6.6	260NO-24D	\$71.40	\$68.95
	240 VAC	11.8	7.0	260NO-220A	\$78.65	\$75.95
100-AMP	120 VAC	32.8	14.0	2100NO-120A	\$174.05	\$167.85
	24 VDC	17.8	17.8	2100NO-24D	\$174.05	\$167.85
	240 VAC	32.2	15.0	2100NO-220A	\$181.55	\$175.05



3 POLE - Normally Open

LOAD RATING	VOLTAGE	VOLT AMPERES V/A	POWER (watts)	PART NO.	PRICE EACH	
					1-9	10+
35-AMP	120 VAC	19.2	10.5	335NO-120A	\$70.35	\$67.90
	24 VDC	9.9	9.9	335NO-24D	\$70.35	\$67.90
	240 VAC	18.6	11.4	335NO-220A	\$81.20	\$78.40
60-AMP	120 VAC	17.4	8.7	360NO-120A	\$108.15	\$104.40
	24 VDC	9.9	9.9	360NO-24D	\$108.15	\$104.40
	240 VAC	17.7	10.5	360NO-220A	\$119.00	\$114.90
100-AMP	120 VAC	49.2	21.3	3100NO-120A	\$254.45	\$245.70
	24 VDC	26.7	26.7	3100NO-24D	\$254.45	\$245.70
	240 VAC	48.3	22.5	3100NO-220A	\$265.35	\$256.20



4 POLE - Normally Open

LOAD RATING	VOLTAGE	VOLT AMPERES V/A	POWER (watts)	PART NO.	PRICE EACH	
					1-9	10+
35-AMP	120 VAC	25.6	14.0	435NO-120A	\$97.15	\$93.80
	24 VDC	13.2	13.2	435NO-24D	\$97.15	\$93.80
	240 VAC	24.8	15.2	435NO-220A	\$111.65	\$107.80
60-AMP	120 VAC	23.2	11.6	460NO-120A	\$147.85	\$142.75
	24 VDC	13.2	13.2	460NO-24D	\$147.85	\$142.75
	240 VAC	23.6	14.0	460NO-220A	\$162.35	\$156.75

How to Order:

4 35 NO - 120A

NUMBER OF POLES:
Insert 2, 3, or 4; or leave blank if single pole (4 pole not available on 100 AMP).

A.C. RESISTIVE LOAD RATING:
35,60 or 100 AMP

CONTACTS:
"NO" = Normally Open
"NC" = Normally Closed

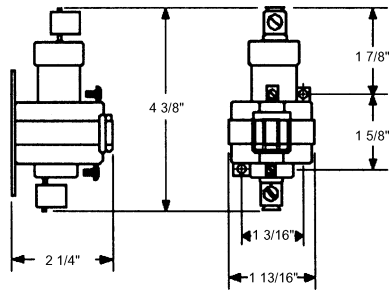
COIL VOLTAGE FOLLOWED BY:
Insert "A" for Alternating Current, or "D" for Direct Current.

ALSO AVAILABLE: Top Termination, Top Screw Termination (on 35 AMP units), Loads other than AC Resistive & Tungsten, and Brackets other than Standard (on 35 and 60 AMP units).

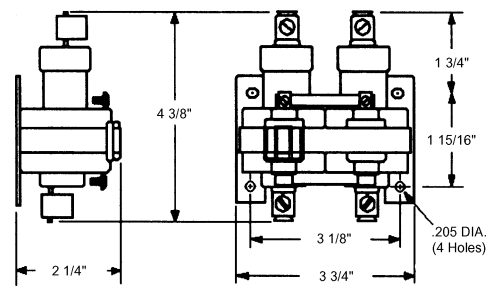
Mercury Contactors - Dimensions



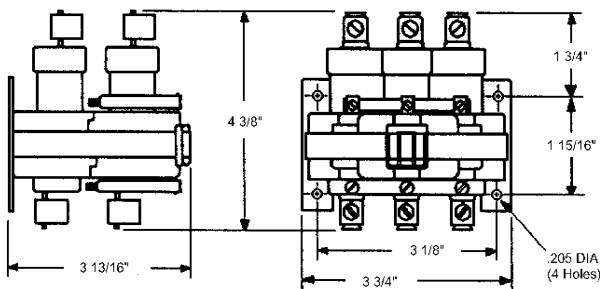
35/60-AMP 1-POLE (Normally Open)



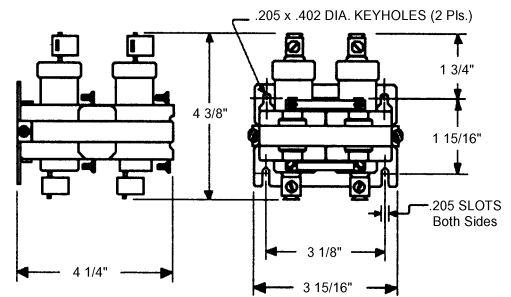
35/60-AMP 2-POLE (Normally Open)



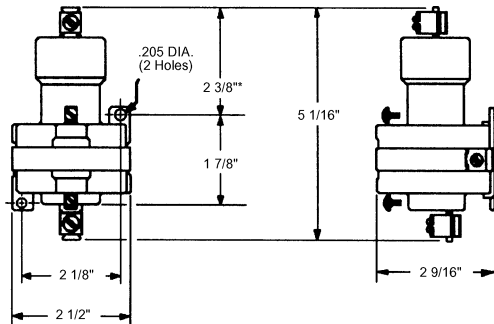
35/60-AMP 3-POLE (Normally Open)



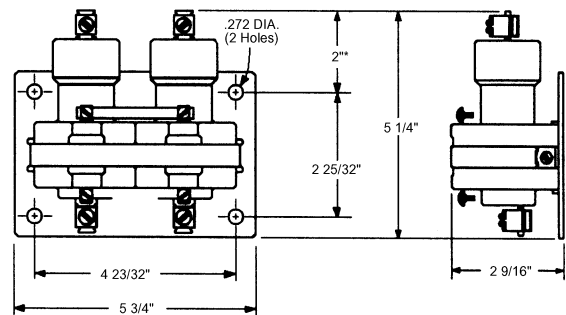
35/60-AMP 4-POLE (Normally Open)



100-AMP 1-POLE (Normally Open)



100-AMP 2-POLE (Normally Open)



100-AMP 3-POLE (Normally Open)

