

Industrial Hose Comparison Chart

	PARKER DAYCO	BOSTON	GATES	GOODYEAR	THERMOID HKP
AIR & WATER	GST-II 7092 GST-II 7093	Industrial A/W Bosflex A/W	Economaster 1 Braid EconoFlex	Sureline Horizon	ValuFlex GS
		Marathoner	DuraFlex	Wingfoot GP	Mainliner Industrial
	MPT-II 7094 MPT-II 7095	Performer II	PremoFlex Plant Master 19B	Ortac	Versicon Maxecon 300
	Grizzly 7107			Gorilla	Hercules 400
SPECIAL APPLICATION AIR & WATER	Hydro-Aire		TufFlex	Pliovic	
	Therm-o-blue Therm-o-red		Thermo GPX	Myriade	
	HDW 7080 Creamery Washdown	Creamery Packing	Creamery 113 S	Plicord Wash Down	Dari-Preen Maxecon Wash Down
	Jiffy 7212	Easy Couple	Lock-On	Insta-Grip	
	Push-On 300 Spiral			Acala	Flex-Loc
		Contractors Water			Contractors Water
	Contractors Water PVC				
PAINT & CHEMICAL	MPT-II 7094 MPT-II 7095				
	Paint Fluid 7108	Nyall	77B	N-R Spray	
PETROLEUM & GAS	Farm Pump 7188		Farm Skid Tank Gravity 5613	Agriculture Gasoline	Farm Tank
	LP Gas 7132		Butane-Propane 20B-HB		
	LP Gas 7232		Butane-Propane 20B-HB		

Heavy Duty Suction Hose



*If you change hose with every color change,
this is the hose for you!*

FEATURES:

Heavy duty PVC, food grade, crystal clear, clockwise spiral, material handling hose. Designed with a corrugated construction for added flexibility and a smooth bore allowing for unrestricted flow. PVC compound complies with applicable FDA and 3A Sanitary Standards. Uses clockwise spiral (RH) double-bolt clamps.

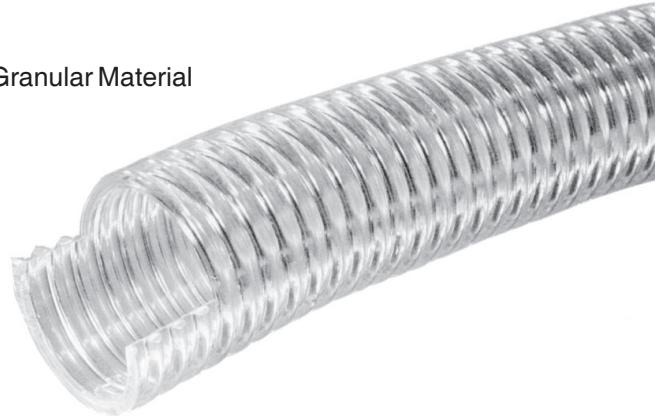
GENERAL APPLICATIONS:

- Pneumatic Conveying System for Dry Powder, Pellets or Granular Material
- More Cost Effective for Short Runs
- Ideal for Frequent Color Changes

SERVICE TEMPERATURE:

Static Condition: -4°F to +150°F

Dynamic Condition: +14°F to +104°F



PART NO.	HOSE I.D.	HOSE O.D.	WORKING PRESSURE @ 72°F (psi)	WORM GEAR CLAMP	SPIRAL BOLT CLAMP	APPROX. WT./ 100'	PRICE PER FOOT	
							25'+	FULL COIL
ESH1	1"	1.30"	50	PSHC-20	--	16#	\$1.12	\$1.05
ESH114	1¼"	1.57"	45	PSHC-20	--	22#	\$1.31	\$1.25
ESH112	1½"	1.87"	45	PSHC-28	SDBC150C	31#	\$1.55	\$1.47
ESH134	1¾"	2.09"	45	PSHC-32	--	40#	\$2.22	\$2.13
ESH2	2"	2.40"	40	PSHC-36	SDBC2C	48#	\$2.24	\$2.14
ESH214	2¼"	2.63"	40	PSHC-40	--	57#	\$3.33	\$3.16
ESH212	2½"	3.00"	35	PSHC-44	SDBC250C	70#	\$3.44	\$3.27
ESH3	3"	3.56"	35	PSHC-52	SDBC3C	95#	\$4.56	\$4.34
ESH4	4"	4.60"	30	PSHC-72	SDBC4C	112#	\$7.34	\$6.98

Sold in 25', 50' or 100' sections only. Standard full coil length 100'.

To reduce dangerous static electricity, we suggest running a vinyl coated ground wire around the vacuum hose between the hopper loader and the metal intake tube in the material supply.

**Clockwise Spiral (RH)
Double-Bolt Clamps**
For a Total 360° Vacuum Seal



SHIPPING ARRANGEMENTS: UPS vs. FREIGHT

PART NO.	100'	75'	50'	25'
ESH1	UPS	UPS	UPS	UPS
ESH114	UPS	UPS	UPS	UPS
ESH112	UPS	UPS	UPS	UPS
ESH134	UPS	UPS	UPS	UPS
ESH2	UPS	UPS	UPS	UPS
ESH214	Freight	Freight	Freight	UPS
ESH212	Freight	Freight	Freight	UPS
ESH3	Freight	Freight	Freight	Freight
ESH4	Freight	Freight	Freight	Freight

Grounded, Heavy Duty Suction Hose



With Embedded Static Wire For Your Vacuum Loader

FEATURES:

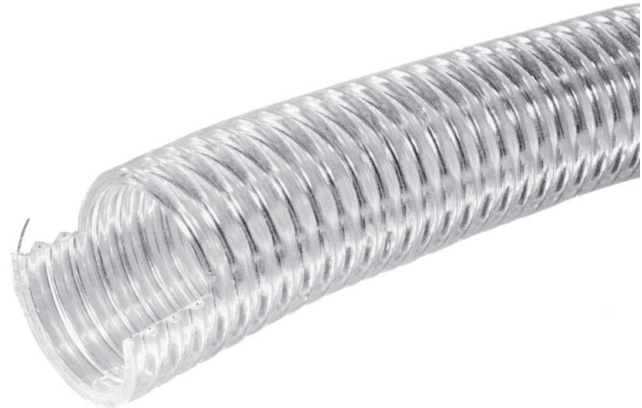
Made of high quality, flexible PVC compound in compliance with FDA and 3A Sanitary Standards. USDA approved for meat and poultry plants. Clear high density PVC helix with embedded static wire, smooth inner surface for easy flow and easy cleaning. Uses clockwise spiral (RH) double-bolt clamps.

APPLICATIONS:

Our Suction Hose with Static Wire is recommended for transmission of powder pellets or granular materials, and for transfer of edible food product, beverages, milk & milk products.

SERVICE TEMPERATURE:

+15°F to +150°F



PART NO.	HOSE I.D.	HOSE O.D.	WORKING PRESSURE @ 70°F (psi)	WORM GEAR CLAMP	SPIRAL BOLT CLAMP	APPROX. WT./100'	PRICE PER FOOT	
							25' +	FULL COIL
ESH114W	1 1/4"	1.52"	50	PSHC-20	--	28#	\$3.63	\$3.50
ESH112W	1 1/2"	1.79"	50	PSHC-28	SDBC-150C	31#	\$3.71	\$3.58
ESH134W	1 3/4"	2.09"	45	PSHC-32	--	44#	\$4.37	\$4.15
ESH2W	2"	2.36"	40	PSHC-36	SDBC-2C	52#	\$5.30	\$5.12
ESH212W	2 1/2"	2.93"	35	PSHC-44	SDBC-250C	81#	\$7.15	\$6.90
ESH3W	3"	3.50"	35	PSHC-52	SDBC-3C	99#	\$9.38	\$9.06
ESH4W	4"	4.50"	35	PSHC-72	SDBC-4C	140#	\$15.58	\$15.04

Other sizes available upon request.

Sold in 25', 50' or 100' sections only. Standard full coil length 100'.



**Clockwise Spiral (RH)
Double-Bolt Clamps**

For a Total 360° Vacuum Seal

**SHIPPING ARRANGEMENTS:
UPS vs. FREIGHT**

PART NO.	100'	75'	50'	25'
ESH114W	UPS	UPS	UPS	UPS
ESH112W	UPS	UPS	UPS	UPS
ESH134W	UPS	UPS	UPS	UPS
ESH2W	Freight	Freight	UPS	UPS
ESH214W	Freight	Freight	Freight	UPS
ESH212W	Freight	Freight	Freight	UPS
ESH3W	Freight	Freight	Freight	Freight
ESH4W	Freight	Freight	Freight	Freight

Super Heavy Duty Suction Hose



Series "WT"

Best Price for Premium Quality!

FEATURES:

PVC, food grade, crystal clear, counter-clockwise spiral (LH), material handling hose, designed with a convoluted cover for increased flexibility and a smooth bore to eliminate material build-up. PVC compound complies with applicable FDA and USDA requirements and 3A Sanitary Standards. Uses counter-clockwise spiral (LH) double-bolt clamps.

GENERAL APPLICATIONS:

- Pneumatic Conveying System for Dry Powder, Pellets or Granular Material
- Best for Abrasive, Long-Term Continuous Runs

SERVICE TEMPERATURE:

Static Condition: -4°F to +150°F
 Dynamic Condition: +14°F to +104°F

Have a Conair™ loader? Note metric sizes.

PART NO.	HOSE I.D.	WORM GEAR CLAMP	SPIRAL BOLT CLAMP	APPROX. WEIGHT PER 100'	FULL COIL	PRICE PER FOOT	
						25'+	FULL COIL
SH114	1¼"	PSHC-20	--	28#	100'	\$1.69	\$1.52
SH112	1½"	PSHC-28	SDBC150	35#	100'	\$2.00	\$1.80
SH134	1¾"	PSHC-32	--	44#	50'	\$2.94	\$2.65
SH2	2"	PSHC-36	SDBC2	56#	100'	\$2.71	\$2.44
SH214	2¼"	PSHC-40	SDBC225	62#	100'	\$3.92	\$3.53
SH212	2½"	PSHC-44	SDBC250	77#	100'	\$4.17	\$3.76
SH3	3"	PSHC-52	SDBC3	110#	50'	\$5.37	\$4.84
SH312	3½"	PSHC-64	SDBC4	147#	50'	\$9.09	\$8.18
SH4	4"	PSHC-72	SDBC4	181#	50'	\$9.34	\$8.41
SH39	39mm (1.54")	PSHC-28	SDBC150	36#	100'	\$2.00	\$1.80
SH45	45mm (1.77")	PSHC-32	--	44#	50'	\$2.94	\$2.65
SH57	57mm (2.24")	PSHC-40	SDBC225	62#	50'	\$3.90	\$3.51

Sold in 25' increments.



To reduce dangerous static electricity, we suggest running a vinyl coated ground wire around the vacuum hose between the hopper loader and the metal intake tube in the material supply.

Counter-Clockwise Spiral (LH) Double-Bolt Clamps
 For a Total 360° Vacuum Seal



SHIPPING ARRANGEMENTS: UPS vs. FREIGHT

PART NO.	100'	75'	50'	25'
SH114	UPS	UPS	UPS	UPS
SH112	UPS	UPS	UPS	UPS
SH39	UPS	UPS	UPS	UPS
SH2	UPS	UPS	UPS	UPS
SH214	Freight	Freight	Freight	UPS
SH212	Freight	Freight	Freight	UPS
SH3	Freight	Freight	Freight	Freight
SH4	Freight	Freight	Freight	Freight
SH45	UPS	UPS	UPS	UPS
SH57	Freight	Freight	UPS	UPS



Grounded, Super Heavy Duty Suction Hose



Series "WE"

**Best Price for
Premium Quality!**

FEATURES:

PVC, food grade, crystal clear, counter-clockwise spiral (LH), material handling hose with embedded static wire, designed with a convoluted cover for increased flexibility and a smooth bore to eliminate material build-up. PVC compound complies with applicable FDA requirements. Uses counter-clockwise spiral (LH) double-bolt clamps.

PART NO.	HOSE I.D.	WORM GEAR CLAMP	SPIRAL BOLT CLAMP	APPROX. WT. PER 100'	FULL COIL LENGTH	PRICE PER FOOT	
						25' +	FULL COIL
SH114W	1 1/4"	PSHC-20	--	33#	50'	\$3.56	\$3.21
SH112W	1 1/2"	PSHC-28	SDBC150	43#	100'	\$3.71	\$3.34
SH2W	2"	PSHC-36	SDBC2	58#	100'	\$5.12	\$4.61
SH214W	2 1/4"	PSHC-40	SDBC225	65#	50'	\$5.76	\$5.19
SH212W	2 1/2"	PSHC-44	SDBC250	89#	100'	\$6.20	\$5.58
SH3W	3"	PSHC-52	SDBC3	125#	50'	\$8.25	\$7.43
SH4W	4"	PSCH-72	SDBC4	193#	50'	\$13.49	\$12.14
SH39W	39mm (1.54")	PSHC-28	SDBC150	43#	50'	\$3.71	\$3.34



Sold in 25' increments.

PART NO.	HOSE I.D.	WORM GEAR CLAMP	SPIRAL BOLT CLAMP	APPROX. WT. PER 60'	FULL COIL LENGTH	PRICE PER FOOT	
						25' +	FULL COIL
SH134W	1 3/4"	PSHC-32	--	17#	60'	\$4.71	\$4.24
SH45W	45mm (1.77")	PSHC-32	--	29#	60'	\$4.71	\$4.24
SH57W	57mm (2.24")	PSHC-40	SDBC225	64#	60'	\$5.76	\$5.19

Sold in 20' increments.

GENERAL APPLICATIONS:

- Pneumatic Conveying System for Dry Powder, Pellets or Granular Material
- Static Wire for Grounding
- Paper Mill Vacuum Lines (for Pneumatic System Dry Material Transfer Only)
- Best for Abrasive, Long-Term Continuous Runs

SERVICE TEMPERATURE:

Static Condition: -4°F to +150°F
Dynamic Condition: +14°F to +104°F

Have a Conair™ loader? Note metric sizes.

We offer shorter lengths not offered by our competitors!

Counter-Clockwise Spiral (LH) Double-Bolt Clamps
For a Total 360° Vacuum Seal



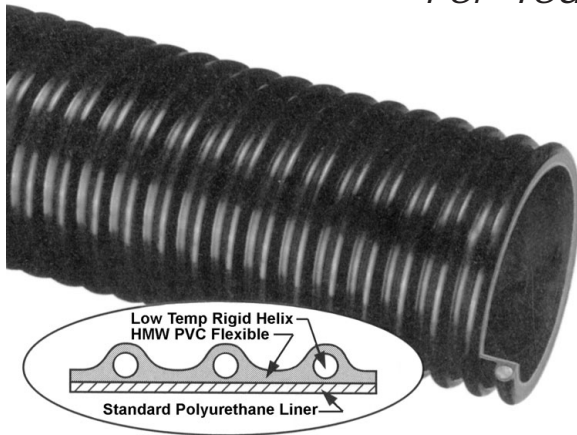
See page 291

SHIPPING ARRANGEMENTS: UPS vs. FREIGHT				
PART NO.	25'	50'	75'	100'
SH114W	UPS	UPS	UPS	UPS
SH112W	UPS	UPS	UPS	UPS
SH39W	UPS	UPS	UPS	UPS
SH134W	UPS	UPS	UPS	UPS
SH2W	UPS	UPS	UPS	UPS
SH214W	UPS	Freight	Freight	Freight
SH212W	UPS	Freight	Freight	Freight
SH3W	Freight	Freight	Freight	Freight
SH4W	Freight	Freight	Freight	Freight

PART NO.	20'	40'	60'
SH45W	UPS	UPS	UPS
SH57W	UPS	UPS	UPS



Tigerflex "Urethane-1" For Your Vacuum Loader



**Abrasion Resistant
Polyurethane Lined**

To reduce dangerous static electricity, we suggest running a vinyl coated ground wire around the vacuum hose between the hopper loader and the metal intake tube in the material supply.

FEATURES:

Polyurethane lined, abrasion resistant PVC material handling hose with counter-clockwise-spiral. Convolved cover is made with low temperature, anti-static HMW PVC compounds for sub-zero flexibility. Smooth urethane liner provides resistance to abrasion and eliminates material build-up. Uses counter-clockwise-spiral double-bolt clamps.

GENERAL APPLICATIONS:

- Pneumatic Conveying System for Powder, Pellets, or Granular Material
- Industrial Vacuum Machines
- Abrasive Material Transfer
- Sand/Shot Blast Recovery Line

SERVICE TEMPERATURE:

Static Condition: -40°F to +150°F
Dynamic Condition: +22°F to +104°F
(Actual service temperature range is application-dependent.)

Available in Black Only

PART NO.	HOSE I.D.	WORM GEAR CLAMP	SPIRAL BOLT CLAMP	FULL COIL	PRICE PER FOOT
USH114	1-1/4"	PSHC-28	--	100'	\$2.47
USH112	1-1/2"	PSHC-28	SDBC150	100'	\$2.72
USH2	2"	PSHC-36	SDBC2	100'	\$4.44
USH212	2-1/2"	PSHC-44	SDBC250	100'	\$5.66
USH3	3"	PSHC-52	SDBC3	50'	\$7.47
USH4	4"	PSHC-64	SDBC4	50'	\$12.33

NOTE: Service life may vary depending on operating conditions and type of material being conveyed. Not for liquid handling use.

ALSO AVAILABLE:

**Clockwise Spiral
Double-Bolt Clamps**

For a Total 360° Vacuum Seal



**Other sizes available
upon request.**

Sold in Full Coils only.