

Temptek® Auxiliary Equipment

Mold Temperature Controllers - Water Units

TEMPTEK



VT-275-LX

VT Series Mold Temperature Controllers are used to process temperature control to 250°F. These units use an incoloy heater and centrifugal pump with standard NPT process fittings. Each unit has stainless steel cabinetry with a galvanized steel base mounted on casters. Two levels of microprocessor instructions are available. The LS Series offers **To** process temperature display and pulsed cooling valve. The LX Series offers **To** and **From** process temperature display with a modulating cooling valve. Both models come standard with process pressure gauges and a 10-foot power cord.



VT-275-LS



MODULATING COOLING VALVE
(VT-275-LX MODEL ONLY)

FEATURES:

- Process Temperatures from 30°F to 250°F
- 20 to 180 GPM
- 3/4 to 5 HP Process Pumps
- 6 to 36 KW Heaters
- 3/8" to 1" Pulsed Cooling Valves (with LS Series Instrument)
- 3/8" to 1" Modulating Cooling Valve (with LX Series Instrument)
- Stainless Steel Cabinetry
- Microprocessor Digital Control
- 2-Year Parts & Labor Warranty



CALL FOR PRICING

800-627-1033

Mold Temperature Controllers - Oil Units

VTO Series Mold Temperature Controllers are used for process temperature control to 400°F. These units use a low-watt density heater and water-cooled centrifugal pump. Female NPT fittings make process installation easy. Each unit has galvanized steel cabinetry with lift off cover and hinged electrical cabinet, plus a galvanized steel base mounted on casters. The microprocessor instrument displays process temperature and machine status. A 10-foot power cord is factory installed.

FEATURES:

- Process Temperatures from 100°F to 400°F
- 20 to 100 GPM
- 1 to 5 HP Process Pumps
- 6 to 36 KW Heaters
- Optional Cooling Heat Exchanger
- Low-watt Density Heater For Fluid Integrity
- Galvanized Cabinetry
- Microprocessor Digital Control
- 2-Year Parts & Labor Warranty

VTO-2100



CALL FOR PRICING

800-627-1033

Dryers

NBD Series Desiccant Dryers use the industry standard dual-bed drying concept in a compact single blower configuration. One blower and multi-function valve control both the process and regeneration flow. The heaters are contained within the desiccant beds to minimize space.

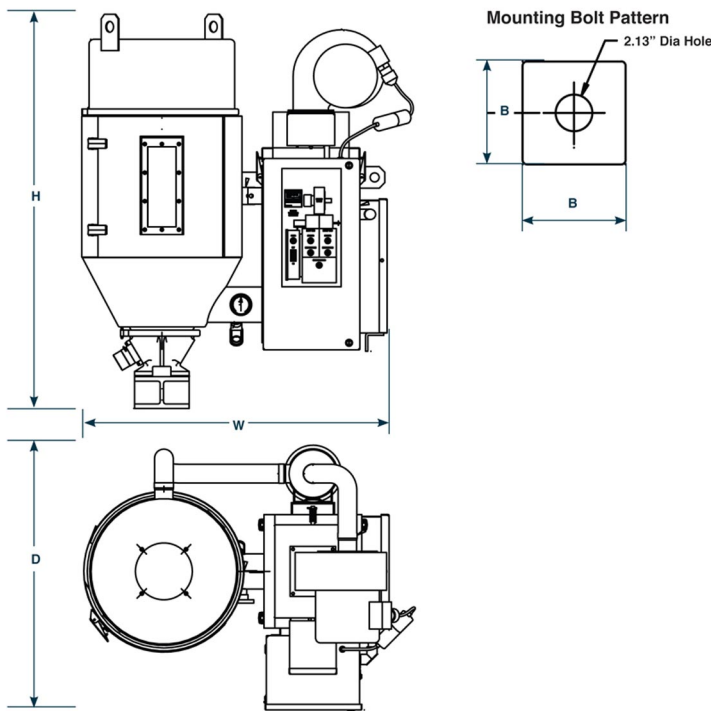
FEATURES:

- Guaranteed -40°F dewpoint process air.
- Dual bed, stainless steel construction.
- Integrated stainless steel insulated drying hoppers with large access door and sight glass (200 lb. hopper is carbon steel).
- Compact design with single blower and a multi-function valve to control both the process and regeneration heaters contained within the desiccant beds to save space.
- Standard voltage : 115/1/60 for NDB-15-T, 460/1/60 for NDB-25-T and 460/3/60 for NDB-50-T.
- Cyclonic 2 stage process filter.
- High heat up to 350°F (cooling coil required over 225°F).

- Tubular Incoloy® sheath heaters.
- Nema 1 enclosure.
- Main line contactor.
- High efficiency 13x molecular sieve desiccant.
- Slide gate shut off.
- Analog thermometer at hopper inlet.
- 1 year warranty.

MICRO PLC BASED CONTROL

- Over-temperature alarm and shutdown with indication.
- Auto-tune PID temperature control with dual LED display.
- Full function graphic display.



NBD Series

Model	Process Rate* lb/hr	Overall Dimensions			Mounting Pattern (B) in	Voltage	Hopper Sizes	Weight lb
		W in	D in	H in				
NBD-15-T	15	35	29	50	4.75	115/1/60	60	500
NBD-25-T	25	35	29	50	4.75	460/1/60	100	530
NBD-50T	50	43	30	60	6.0	460/3/60	200	725

Vacuum Loaders

TVL Series Vacuum Loaders have a modular design for greater flexibility and efficiency. The no-tool access and push-fit assembly provides fast cleanout for quick material changes.

FEATURES:

- 3/8 HP Motor w/ Control Instrument
- Gravity Discharge w/ Integral Reed Demand Switch
- Time Fill Operation
- Vertical Feed Tube
- 10' of Flexible Hose

TVL Series



CALL FOR PRICING

800-627-1033

Granulators

The EM Series Granulators are designed for maximum versatility. These press-side granulators are operator friendly, easy to service and easy to maintain. Precision scissor-cut action provides maximum throughput efficiency.

FEATURES:

- Manual or Robotic Feed
- Interlock Time Delay Safety
- 4 Models Available
- D2 High Carbon Steel Knives
- Tangential Feed Design

CONSTRUCTION:

Hopper: Combination Hopper for Front (manual) Feed or Top (robotic) Feed; Hinged for Easy Opening for Cleaning and Servicing

Noise Control: Engineered to meet 90 DBA or less for most materials. Special Steel/Plate/Steel Laminate to reduce resonant noise

Cutting Chamber: Tangential Feed Design to Reduce Flyback; Heavy Duty Welded Steel Construction

Rotor: 3 Blade Open Type

Knives: 3 Rotor; 2 Bed; D2 High Carbon / High Chrome Tool Steel

Screen: 1/4" or 5/16" diameter holes; Reversible

EM Series
Press-Side



CALL FOR PRICING

800-627-1033

Temptek® Chillers



CF-2W



CF-1A



CF-10A

Portable Chillers

CF Series Portable Chillers are used for process temperature control from 20°F to 65°F. Portable chillers are available from 1/4 to 40 tons. These units use a refrigerant zone with a compressor and evaporator, along with a reservoir and coolant pump. Water-cooled models (CF-W) use a plant water source for condensing. Air-cooled models (CF-A) use fans or blowers to move ambient air across the condenser.

STANDARD FEATURES:

- Non-ferrous Insulated Reservoir
- Refrigerant Low Pressure Limit
- Refrigerant High Pressure Limit
- Freezestat Limit
- 1-Year Parts & Labor Warranty



CALL FOR PRICING

800-627-1033

FEATURES: (2 to 40 Tons)

- Galvanized Steel Frame and Enclosure Panels
- Microprocessor Control w/ Temperature Display and Machine Status
- Standard NPT Process Fittings
- Centrifugal Pumps
- Air or Water-cooled Condensers
- Scroll or Reciprocating Compressors
- Brazed Plate Evaporators

FEATURES: (1/4 to 1.5 Tons)

- Galvanized Steel Frame
- Microprocessor Control w/ Temperature Display
- Standard NPT Process Fittings
- Compact Frame w/ Small Footprint
- Coaxial Evaporator
- Hermetic Compressor
- Fan Style Air-cooled Condenser
- Brass Vane Pump

Central Chillers

Central Chillers provide economical plant-wide cooling, great for expansions of existing system or new start ups. MA and MW Series modules are available in 5 to 180 tons.

STANDARD FEATURES:

- Scroll Compressors
- Refrigerant Low Pressure Safety
- Refrigerant High Pressure Safety
- Liquid Line Solenoid Valve
- Liquid Receiver
- Sight Glass w/ Moisture Indicator
- Thermostatic Expansion Valve
- Brazed Place Evaporator
- Low Flow Limit
- Full Insulation
- 1-Year Parts & Labor Warranty

MA Series (Air-cooled)

FEATURES:

- 5 to 40 Ton Capacity
- Serves 12 to 96 GPM Systems
- Fan Style Condenser (5 to 10 Ton Models)
- Blower Style Condenser (15 to 30 Ton Models)
- Remote Condensers Available for Units from 10 to 100 Tons

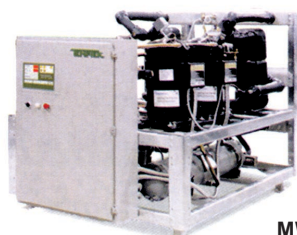
MA Series



MW Series (Water-cooled)

FEATURES:

- 5 to 180 Ton Capacity
- 1, 2, or 3 Circuit Designs
- Single & Multizone Controllers
- Water-cooled Condenser



MW Series



CALL FOR PRICING

800-627-1033

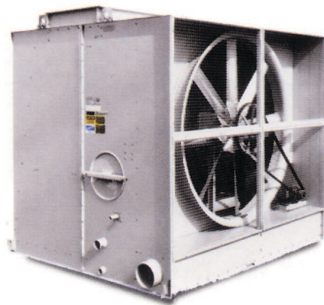
Temptek® Cooling Towers

Temptek® Cooling Towers provide cooling water to 85°F (depending on ambient air temperature and humidity). Cooling towers are a part of a central cooling system including pumps or pump tank stations and are installed outside, generally either elevated on a stand or mounted on a roof. Available capacities range from 7 to 540 tons in both fiberglass and galvanized steel construction.

TM Series

FEATURES:

- Galvanized Steel Construction
- 7 to 250 Ton Capacity
- CTI Certified
- Drip-proof Motor in Dry Air Stream
- Large, Non-clogging Spray Nozzles
- 5-Year Shell Warranty



T200M

TP Series

FEATURES:

- Fiberglass Construction
- Galvanized Structural Steel Base
- 45 to 540 Ton Capacity
- Induced Draft Design
- Non-ferrous Construction on all Wet Surfaces
- Single and Multi-cell Models
- Gasketed, Easy-to-remove Inspection Covers
- TEFC Fan Motor w/ ABS Fan Blades
- PVC Wet Deck and Drift Eliminator
- 10-Year Shell and 5-year Mechanical Warranty



TP-135



CALL FOR PRICING

800-627-1033

Temptek® Pump Tank Stations

Available from 275 to 3200 gallon capacities with 1, 2 or 3 pump configurations. Tank systems can be customized to meet virtually any requirements. Choice of three long-lasting materials: mild steel, stainless steel or polyethylene.

PPT Series (Polyethylene)

FEATURES:

- Rotational Molded Polyethylene Reservoir
- Hinged Tank Lid
- 450 to 3200 Gallons Capacity
- Reservoir Level Sight Glass
- 2 to 40 HP Pumps Providing 40 to 1000 GPM
- Suction and Discharge Service Valves
- Water Make-up System
- 10-Year Tank Failure Warranty

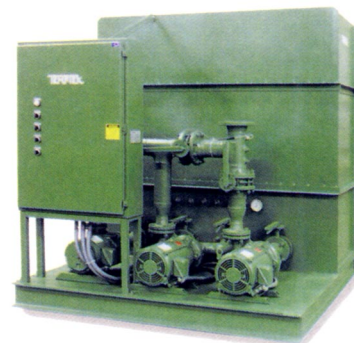


PPT-1600

PT Series (Mild Steel)

FEATURES:

- Epoxy-coated Mild Steel Construction
- 275 to 3000 Gallon Capacity
- Reservoir Level Sight Glass
- 2 to 60 HP Pumps Providing 40 to 1000 GPM
- Suction and Discharge Service Valves
- 1-Year Parts and Labor Warranty



PT-750



CALL FOR PRICING

800-627-1033